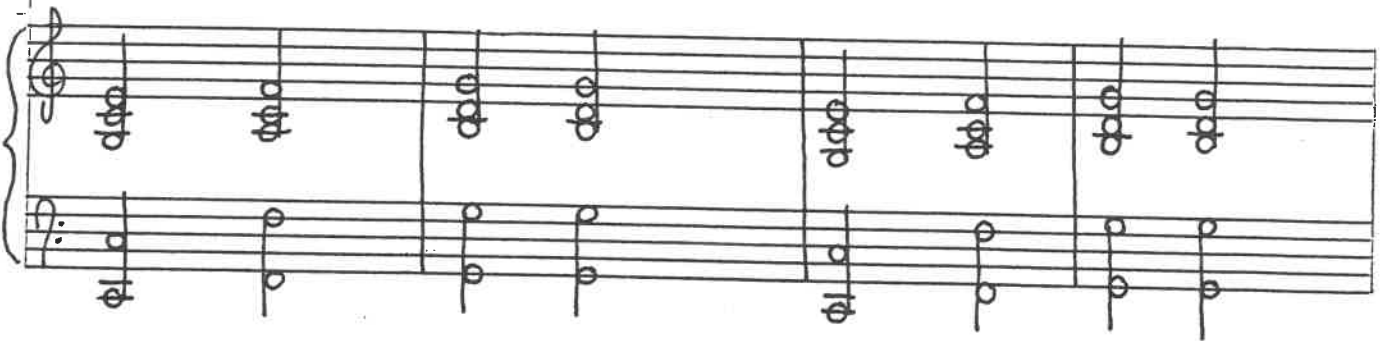


"As Mary Slept Into the Night"
Words and music by Jennifer B. Hoopes

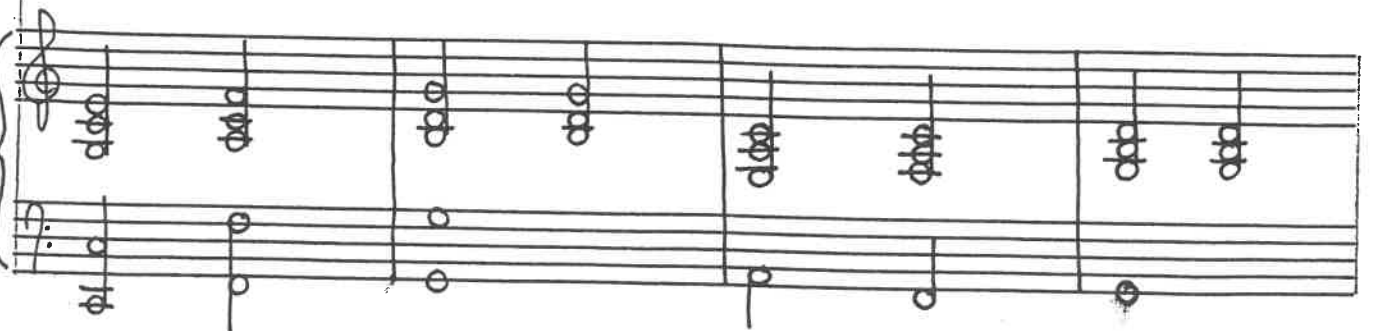
The journey
The wisemen



long and hard and la - bored, came to an end in Bethlehem. This special
came and brought him treasures, and then they knelt before their king, and as they

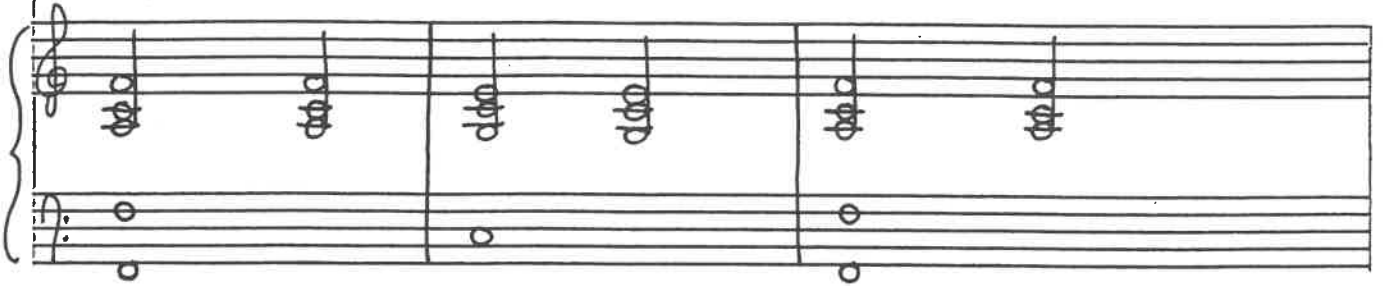


night the virgin Ma - ry bore a child, the king of men. Shepherds
looked upon this chi - ld - they joined hands to sing, "We have

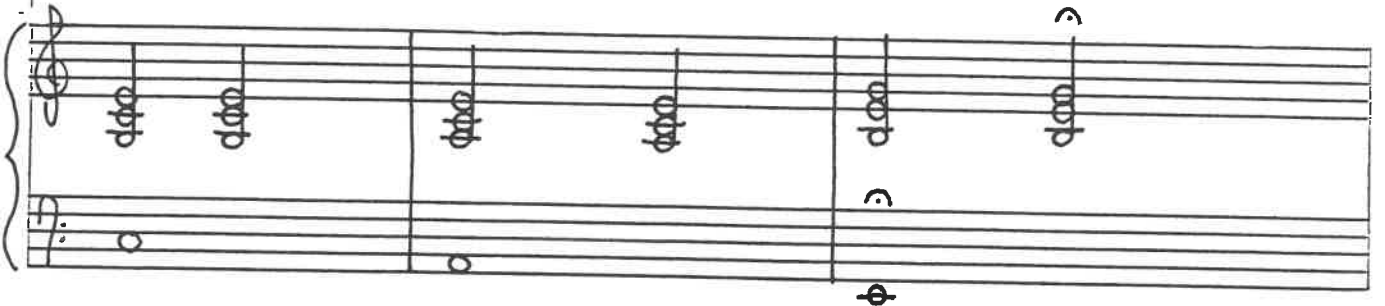




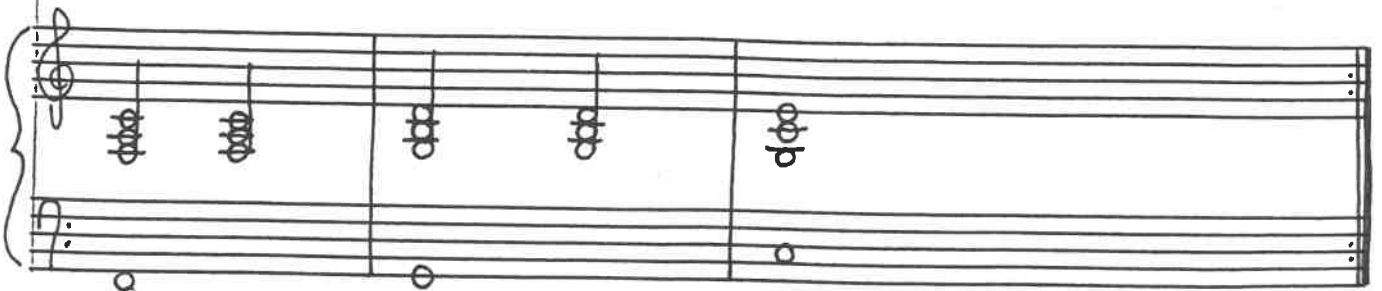
came to see their Savior, guided here by one star's
 come to see our Savior, guided here by one star's



light. Joseph held his son, this child of God, as Mary
 light." Then they hushed their song and knelt to pray, as Mary



slept into the night.
 slept into the night.



A single staff of music with a treble clef. It contains several measures of music. The first measure has a whole note chord. The second measure has a whole note chord. The third measure has a half note chord. The fourth measure has a half note chord. The fifth measure has a quarter note chord. The sixth measure has a quarter note chord. The seventh measure has a quarter note chord with a sharp sign. The eighth measure has a quarter note chord. The ninth measure has a quarter note chord with a sharp sign.

Ahh



A grand staff consisting of a treble clef on the top staff and a bass clef on the bottom staff. Both staves are empty, with only a few horizontal lines indicating the staff structure.

A single staff of music with a treble clef. It contains several measures of music. The first measure has a whole note chord. The second measure has a whole note chord. The third measure has a half note chord. The fourth measure has a half note chord. The fifth measure has a quarter note chord. The sixth measure has a quarter note chord. The seventh measure has a quarter note chord. The eighth measure has a quarter note chord. The ninth measure has a quarter note chord. The tenth measure has a quarter note chord.

Ooo



A grand staff consisting of a treble clef on the top staff and a bass clef on the bottom staff. Both staves are empty, with only a few horizontal lines indicating the staff structure.

A single empty musical staff with a treble clef.

A grand staff consisting of a treble clef on the top staff and a bass clef on the bottom staff. Both staves are empty, with only a few horizontal lines indicating the staff structure.