

Narration 5:

Narrator 1: The scriptures tell us very little about what the shepherds said when reached the manger and saw the baby Jesus. Perhaps they were so touched that they could not say anything at all. Perhaps, like the angels who had announced the Savior's birth, they could only express their joy through song.

Narrator 2: Someday, each of us will stand before Jesus and to bask in his presence. Until that time, we can look forward with reverent wonder, expressing through song, the kind of feelings that regular words simply cannot convey.

Narrator 3: "Fair is the sunshine, fairer the moonlight, and all the stars in heaven above. Jesus shines brighter, Jesus shines purer, and brings to all the world His love."

Narrator 4: Fair are the meadows, fairer the woodlands robed in the flowers of blooming spring. Jesus is fairer, Jesus is purer. He makes the sorrowing spirit sing.

Away in a Manger

(Crusader's Hymn)

Traditional English Carol
Traditional German Hymn

Traditional English Carol
Traditional German Hymn
Michael D. Young

SA

TB

Piano

5

Solo

A

Pno.

10

way in a man_ ger no crib for His bed_____ the lit tle Lord

Pno.

10

15

mp All

Je sus lay down his sweet head. The stars in the

Pno.

15

19

heaven's looked down where He lay the little Lord Jesus a

Pno.

19

23

sleep on the hay.

Pno.

23

28

Solo

The cat tle are

28

Pno.

33

low ing the poor ba by wakes but lit tle Lord Je sus no

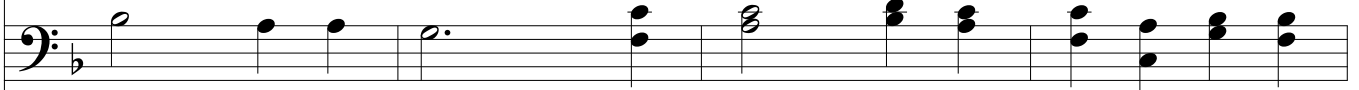
33

Pno.

38



mf All



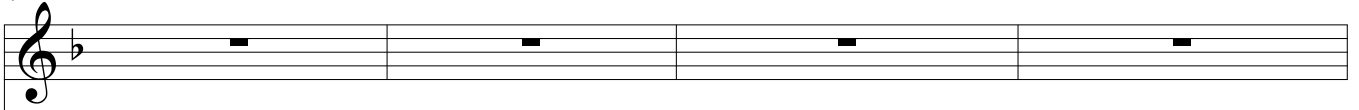
cry ing He makes. I love thee, Lord Je sus look

38



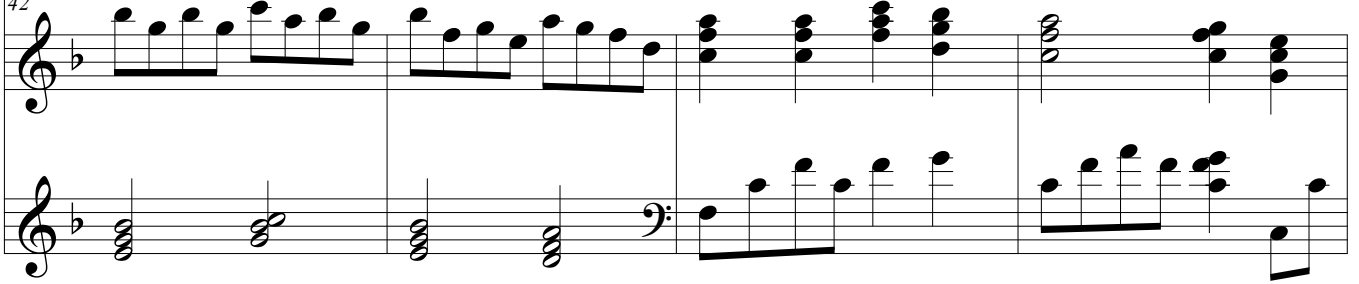
Pno.

42



down from the sky and stay by my cra dle 'til morn ing is

42



Pno.

46 *f*

Be near me Lord

nigh. Be near me Lord

Pno.

52

Je sus I ask thee to stay close by me for ev er and

Je sus I ask thee to stay close by me for ev er and

Pno.

57 *mp*

love me I pray. Bless all the dear child—dren in

love me I pray. Bless all the dear child—dren in

Pno.

57

61 *p*

thy tender care_____ and fit us for hea ven to live with thee

thy tender care_____ and fit us for hea ven to live with thee

Pno.

61

The image shows a musical score for the hymn 'Away in a Manger'. It is divided into two systems. The first system covers measures 57 to 60, and the second system covers measures 61 to 64. Each system includes a vocal line with lyrics and a piano accompaniment. The key signature is one flat (B-flat major or D minor), and the time signature is common time. The piano part features a steady eighth-note accompaniment in the left hand and chords and melodic lines in the right hand. Dynamics include mezzo-piano (mp) and piano (p).

65

A vocal staff in G major (one flat) with a treble clef. It contains a single whole note G4 followed by three measures of rests.

there.

A bass staff in G major (one flat) with a bass clef. It contains a single whole note G2 followed by three measures of rests.

there.

65

Pno.

Piano accompaniment for measures 65-68. The right hand plays chords: G major (measures 65-66), F#m (measures 67-68). The left hand plays a rhythmic pattern of eighth notes: G2-A2-B2-C3 (measures 65-66), D3-E3-F3-G3 (measures 67-68).

69

A vocal staff in G major (one flat) with a treble clef. It contains four measures of rests.

A bass staff in G major (one flat) with a bass clef. It contains four measures of rests.

69

Pno.

Piano accompaniment for measures 69-72. The right hand plays chords: G major (measures 69-70), F#m (measures 71-72). The left hand plays a rhythmic pattern of eighth notes: G2-A2-B2-C3 (measures 69-70), D3-E3-F3-G3 (measures 71-72).

ff

73

Beau ti ful Sa vior

Beau ti ful Sa vior

Pno.

73

77

Lord of the na tions. Son of God and Son of

Lord of the na tions. Son of God and Son of

Pno.

77

82 *mf*

Man. Thee will I hon__ or, praise and give

Man. Thee will I hon__ or, praise and give

Pno.

86 *f*

glor__ y. Give praise and glor y e ver more.

glor__ y. Give praise and glor y e ver more.

Pno.

90 a capella

p

pp

Give praise and glory ever more.

Give praise and glory ever more.

The vocal staves for Soprano and Alto are shown. The Soprano staff is in treble clef and the Alto staff is in bass clef. Both are in the key of D major. The music consists of a series of quarter notes in the first five measures, followed by a half note in the sixth measure, and a whole note in the seventh measure. The lyrics are: "Give praise and glory ever more."

Pno.

(If needed)

The piano accompaniment is shown in two staves, treble and bass clef. It consists of a series of quarter notes in the first five measures, followed by a half note in the sixth measure, and a whole note in the seventh measure. The lyrics are: "(If needed)".