

Christ is the Light

Lyrics by Grace Hegy
and Shannon Blodgett

Vocal Solo and Piano

Grace Hegy

Prayerfully ♩ = 75

Piano

8 *p*

When I need Him. When I'm in des -

8

14

pair, He sees and is a - ware. When I've lost my-self

14

38

cresc.

light. I'll sur - ren - der my ev' - ry - doubt and fright. For

cresc.

mf

43

Christ is the light that shines in the dark - ness. He is my one true

mf

48

friend, my bro - ther, my guide. The Lord is my light, so

53



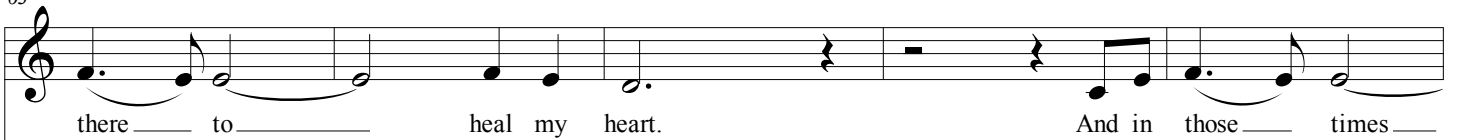
Piano accompaniment for measures 53-57, featuring a steady eighth-note accompaniment in the right hand and a bass line in the left hand.

58

mp

Piano accompaniment for measures 58-62, featuring a steady eighth-note accompaniment in the right hand and a bass line in the left hand. The dynamic marking *mp* is present.

63



Piano accompaniment for measures 63-67, featuring a steady eighth-note accompaniment in the right hand and a bass line in the left hand.

68 *cresc.*

— When my best's not e - nough, I re - mem - ber each day is a brand new

Detailed description: This block shows the vocal line for measures 68 to 72. The music is written on a single treble clef staff. It begins with a whole rest, followed by a series of quarter notes: G4, A4, B4, C5, B4, A4, G4. The final measure contains a half note G4 with a fermata. The dynamic marking *cresc.* is placed above the staff.

68 *cresc.*

Detailed description: This block shows the piano accompaniment for measures 68 to 72. It consists of two staves: a treble clef staff and a bass clef staff. The right hand plays chords and moving lines, while the left hand plays a steady eighth-note accompaniment. The dynamic marking *cresc.* is placed above the right-hand staff.

73 *f*

start. — For — Christ is the light that shines in the

Detailed description: This block shows the vocal line for measures 73 to 77. It begins with a whole rest, followed by a half note G4, a quarter note A4, a quarter note B4, a quarter note C5, a quarter note B4, a quarter note A4, and a quarter note G4. The dynamic marking *f* is placed above the staff.

73 *f*

Detailed description: This block shows the piano accompaniment for measures 73 to 77. It consists of two staves: a treble clef staff and a bass clef staff. The right hand plays chords and moving lines, while the left hand plays a steady eighth-note accompaniment. The dynamic marking *f* is placed above the right-hand staff.

78

dark - ness.

Detailed description: This block shows the vocal line for measure 78. It begins with a half note G4, followed by a quarter note A4, and a quarter note B4. The rest of the measure is a whole rest. The lyrics "dark - ness." are written below the staff.

78 *subito p* *cresc.*

Detailed description: This block shows the piano accompaniment for measure 78. It consists of two staves: a treble clef staff and a bass clef staff. The right hand plays chords and moving lines, while the left hand plays a steady eighth-note accompaniment. The dynamic marking *subito p* is placed above the right-hand staff, and *cresc.* is placed above the right-hand staff.

Christ is the Light

85

ff

For_ Christ is the light. He has

ff

89

lift - ed my sor - rows. His e - ver - last - ing love can - not be de -

94

mp rall.

nied. I won't for - get for me He died. _____

mp *rall.*